

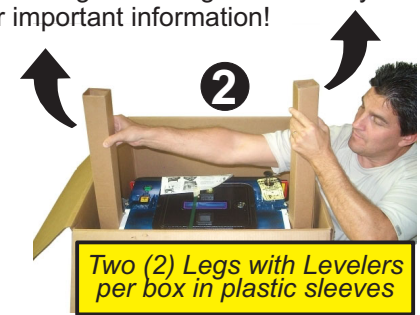
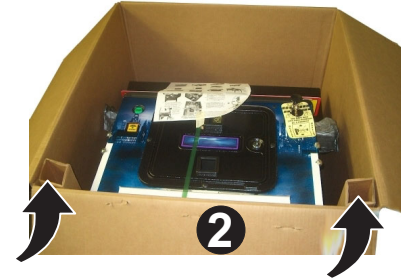
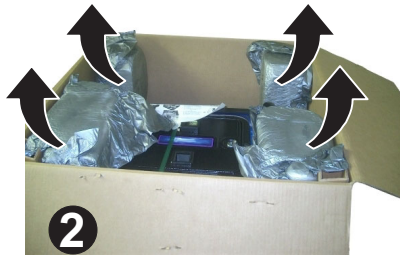
# PINBALL GAME SET-UP

**CAUTION:** At least two (2) people are required to move and maneuver game. Use proper moving equipment & extreme care while handling. Pinball game is heavy! 280lbs (+/- 5) Boxed. Refer to Service Game Manual for further **After Set-Up Procedures** (Section 1, Chapter 1) and other important information!



## TOOLS REQUIRED:

5/8" Socket Wrench, Utility Knife & Snips



Two (2) Legs with Levelers per box in plastic sleeves

1. Before unpacking box, note the side which says "TRUCK THIS SIDE ONLY" (this is the side the box will be cut). **Note:** If you want to "save" the box, lay box flat on this side, pull game out and tilt back into the upright position as shown. Use of a blanket is then required to protect floor.
2. With top of the box open, remove the four (4) foam pieces and the two (2) narrow box tubes which contain the four (4) Identical Legs with Levelers (2 per tube).



3. At this point **DO NOT CUT STRAPPING** (You want to keep the Backbox secured in the down position).

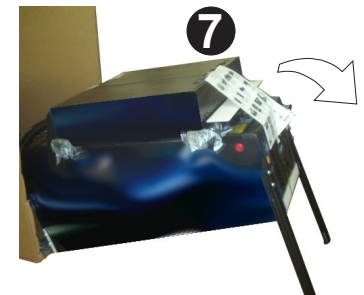
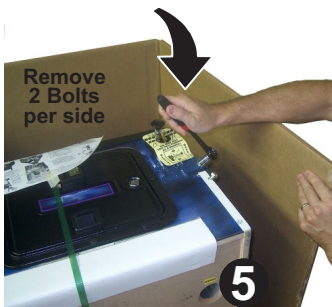
4. With the utility knife, **CAREFULLY!** cut down on the left and right sides as shown. Let it fall forward and remove the entire side by carefully cutting the bottom.



Please be aware of the floor or carpet under the box while you are cutting so no damage occurs!

5. With the 5/8" Socket Wrench, loosen and remove the 2 Leg Bolts on each side of the front cabinet.

6. Install **FRONT LEGS** using the bolts removed from **Step 5**. Secure tightly. **Take care not to scratch the Finish on any of the Legs.**



7. Carefully set the game down on the **FRONT LEGS**. Care should be taken... **Game is heavy, two (2) people are recommended for this and the following step. SET ASIDE THE OPEN BOX.**

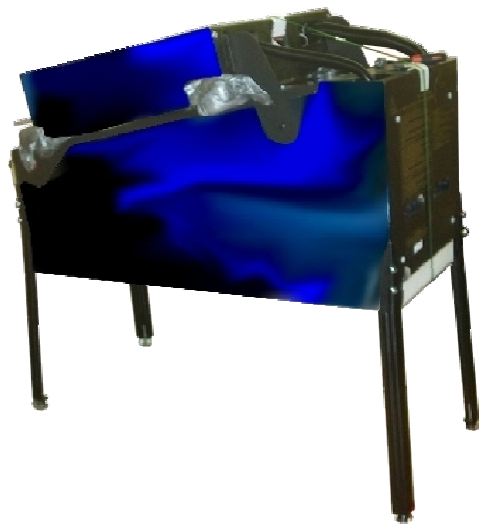
8. With the 5/8" Socket Wrench, loosen and remove the 2 Leg Bolts on each side of the rear cabinet.

9. Using supports or two (2) people, prop the rear of the cabinet up. (Not shown in pictures is second person handing legs and bolts to the installer.)

10. Install **REAR LEGS** using the bolts removed from **Step 8**. Secure tightly. **Take care not to scratch the Finish on Legs.**

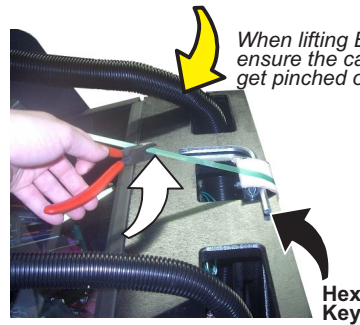






11

11. Cut **NYLON STRAPPING**. **CAUTION: Strapping will SNAP, protect your eyes! Use extreme care when using a utility knife, snips. Remove all V boards.**



12

12. After the **BACKBOX** is in the **UPRIGHT POSITION**, locate the **5/16" HEX KEY**. While inserted, rotate **KEY** with a **3/4 turn** until latched & locked.



**NOTE: COIN DOOR KEYS are tied to the Shooter Rod\* (if equipped) or taped to the Playfield Glass (if equipped with Auto Plunger Button). Remove keys. BACKBOX KEY are located inside Coin Door. Backbox Lock (remove Backglass to access the CPU/Sound and I/O PCBs).**

**ALWAYS STORE THE GAME SERVICE MANUAL & INFORMATION SHEETS INSIDE THE CABINET WHEN NOT USING.**

13. With the keys removed, open the **COIN DOOR**. Pull the **YELLOW HANDLE** to the **LEFT** and at the same time pull up on the **FRONT TOP MOLDING**, remove and set aside.



13



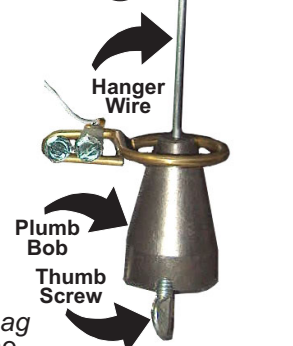
13

The **PLAYFIELD GLASS** can now be pulled out forwards and removed. **TAKE CARE** while moving; set glass on a safe surface (carpeting recommended).

14



15



15. Install the **PLUMB BOB** (located in parts bag in cash box) onto the **Hanger Wire** and tighten the **Thumb Screw**. Loosening the **Thumb Screw** & lowering or raising the **PLUMB BOB** makes the **Games Tilt Function** more or less sensitive (tilt warnings adjustable through **DIAGNOSTICS, GO TO ADJUSTMENTS MENU**).

14. Through the open **Coin Door**, remove the **RETAINING CLIP** at the rear of the **CASH BOX** and open. Remove the **PINBALLS & the PLUMB BOB** from the **SPARE PARTS BAG** (save the other spare parts in cabinet). Install the **PINBALLS** by placing them on the playfield so they can roll down between the lower flippers into the **Ball Trough** (the amount of pinballs to install noted under **FRONT TOP MOLDING** or 1st page of manual). **Remove any shipping materials which may be present. Check for parts which may have come loose during transportation and secure.**

Remove the **GAME SERVICE MANUAL** (stapled to side of the left wall of the cabinet). Review Section 1, Chapter 1, Page 1, and perform Steps 1 – 8+. Review the end of this chapter on how to lift the playfield to access the Plumb Bob Tilt. **READ! YOUR SERVICE GAME MANUAL** and review the **SERVICE MENU** (Diagnostics, Adjustments, Installs), Parts & Schematics.

**GAME SERVICE MANUALS ON-LINE:** <http://www.sternpinball.com/techsupport.shtml>



**PINBALL, INC.**

Stern® Pinball, Inc. © 2008  
SPI Part № 755-5310-08