



FC-016 Flower Bee



Specification

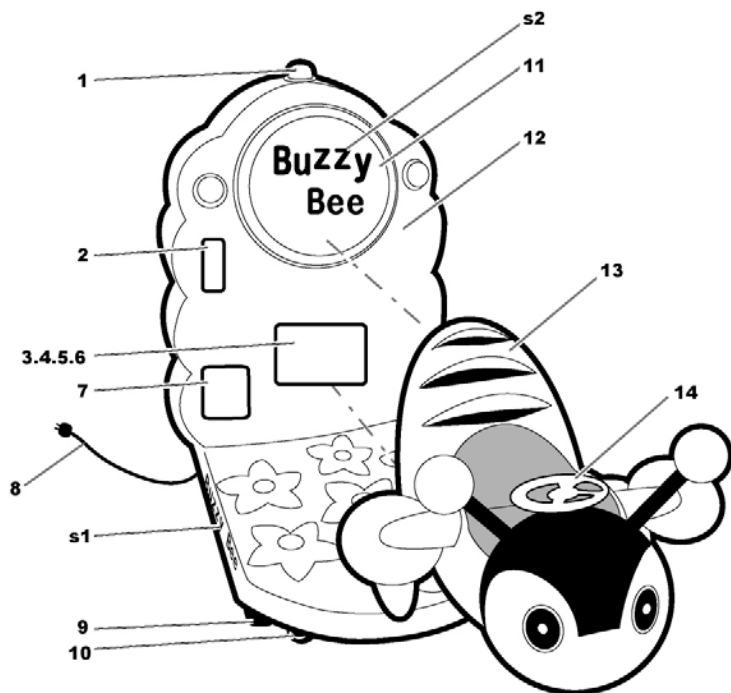
Dimension L130 x W85 x H125 cm

Weight 80 kgs

Voltage 110V AC, 60Hz, 3A, Max 6A
220V AC, 50Hz, 3A, Max 6A



Flower Bee Detail Manual

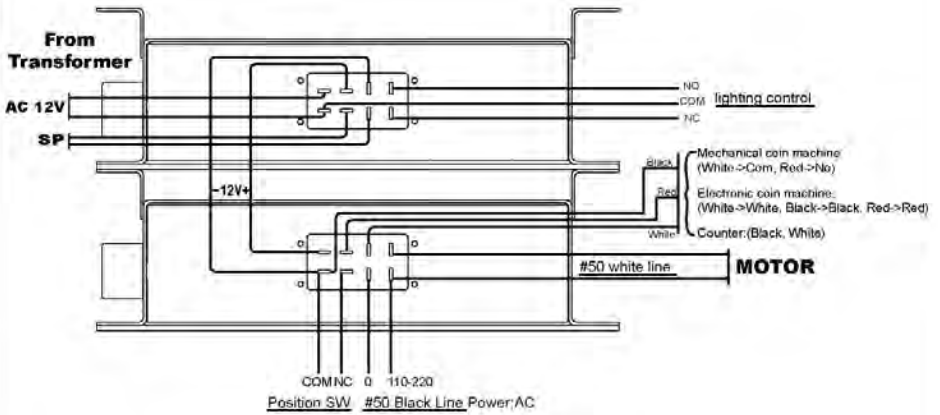


- 1. Light#2
- 2. Electronic coin machine(key#1)
- 3. Maintenance door-big(key#1)
- 4. Double frame
- 5. Music box
- 6. Controller
- 7. Coin box(key#2)
- 8. Power-plug locates at rear of base
- 9. Fixer

- 10. Wheel
- 11. Central carrousel
- 12. Flower FRP
- 13. Bee FRP
- 14. Steering wheel#1

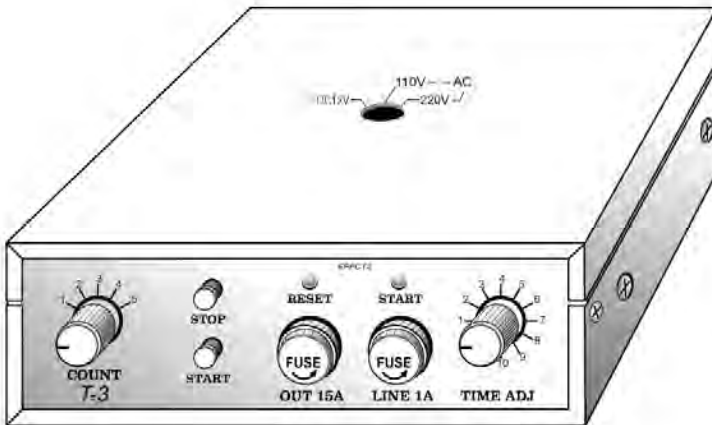
s1~s2. Sticker

Double Frame Wire Manual



size: W188mm x L78mm x H113mm

Controller Operating Manual



Count: Adjust the coin from 1 coin to 5 coins

Stop Button: For Checking machine without insert coin to "STOP" the machine

Start Button: For Checking machine without insert coin to "START" the machine

Reset: Red lighting when power connect

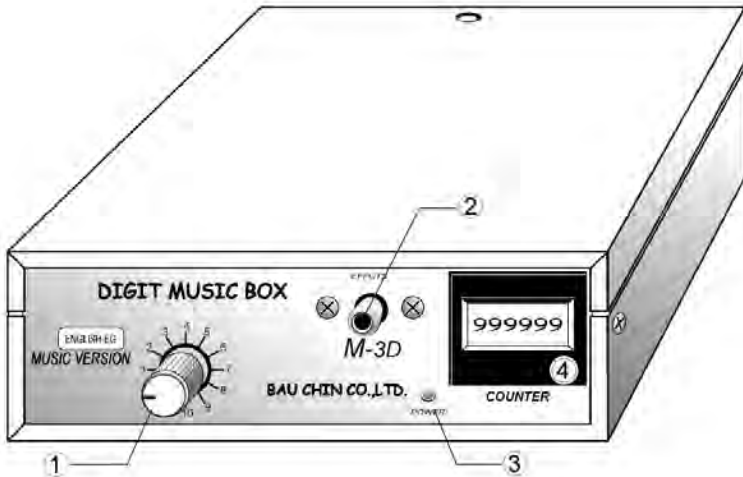
Start: Green lighting when machine start to working

1~12 play Time adjust:

- | | |
|-----------------------------|-----------------------------|
| 1. 1 Minute and 30 Seconds | 7. 3 Minutes and 30 Seconds |
| 2. 1 Minute and 40 Seconds | 8. 4 Minutes |
| 3. 1 Minute and 50 Seconds | 9. 4 Minutes and 30 Seconds |
| 4. 2 Minutes | 10. 5 Minutes |
| 5. 2 Minutes and 30 Seconds | 11. 10 Seconds for testing |
| 6. 3 Minutes | 12. 0 |



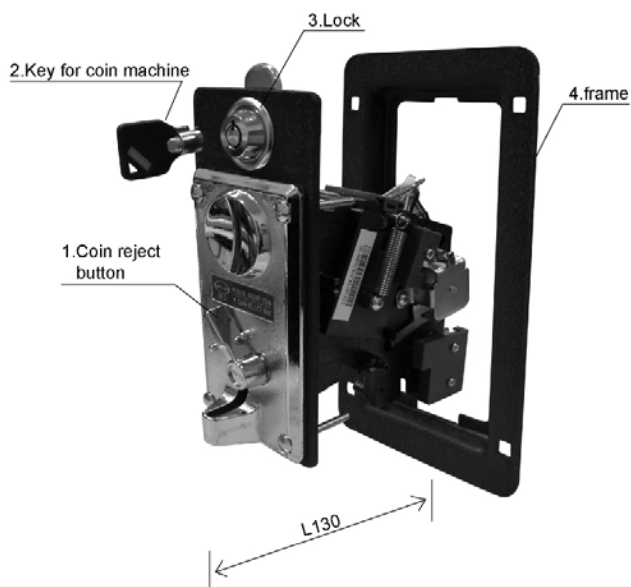
Music Box Operating Manual



- 1. **1-12:** Sound volumes adjust
- 2. **Sound button connection**
- 3. **Power light:** When power connect
- 4. **Counter:** Coin Counter
- 5. **Music:** 12 English kiddy songs to repeat



Electronic Coin Machine Operating Manual



size:mm

Electronic Coin Machine Operating Manual

DIDGITAL COMPARABLE ELECTRONIC
INSTALLATION HI-07CS+LED

STEP1

Cheng the right coin for use from the clamp.

STEP2

Adjust the right insert size for use from the front panel back side.

STEP3

Select the right mode: Normal Open/ Normal Close* **TIMER SWITCH*** for synchronizing your system.
100ms (Slow Speed/ Long Pulse)
50ms (Medium Speed/ Medium Pulse)
30ms (Fast Speed/ Short Pulse)

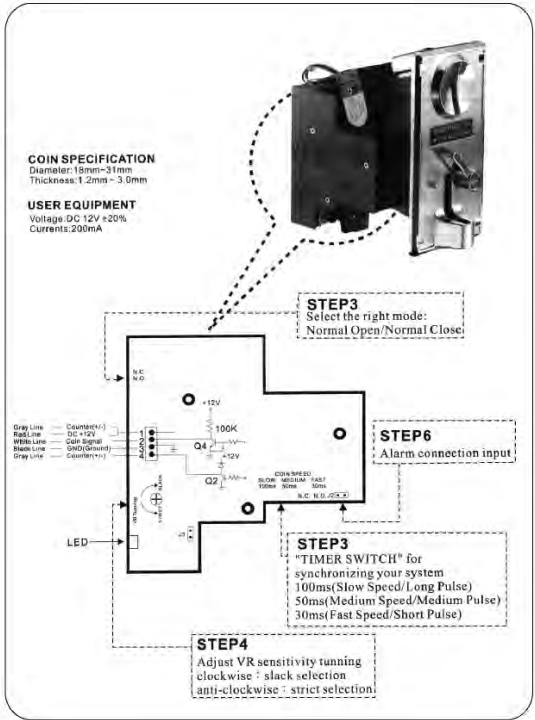
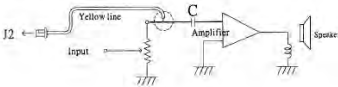
STEP4

Adjust VR sensitivity tuning
Clockwise: slack selection (LED dark->light)
Anti-clockwise: strict selection (LED light->dark)

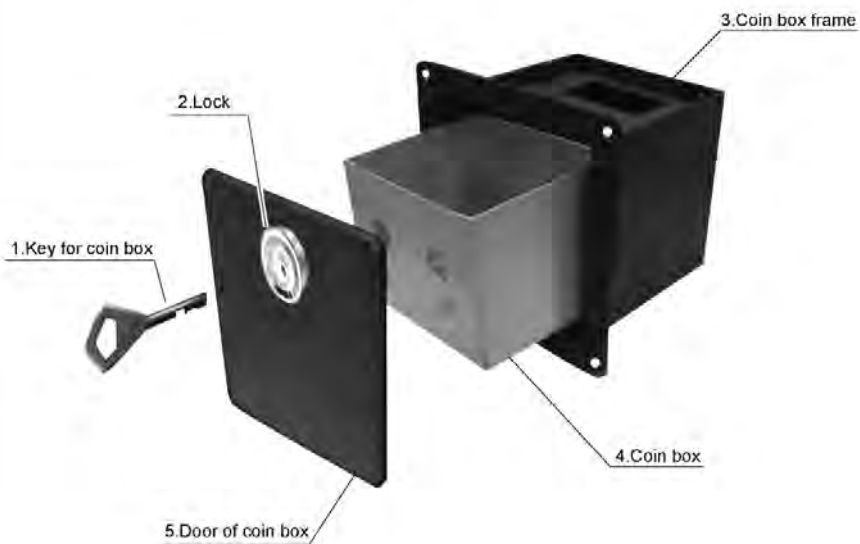
STEP5

- Gray Line Counter (+/-)
 - Red Line DC+12V
 - White Line Coin Signal
 - Black LINE GND (Ground)
 - Gray Line Counter (+/-)
- Counter**

STEP6

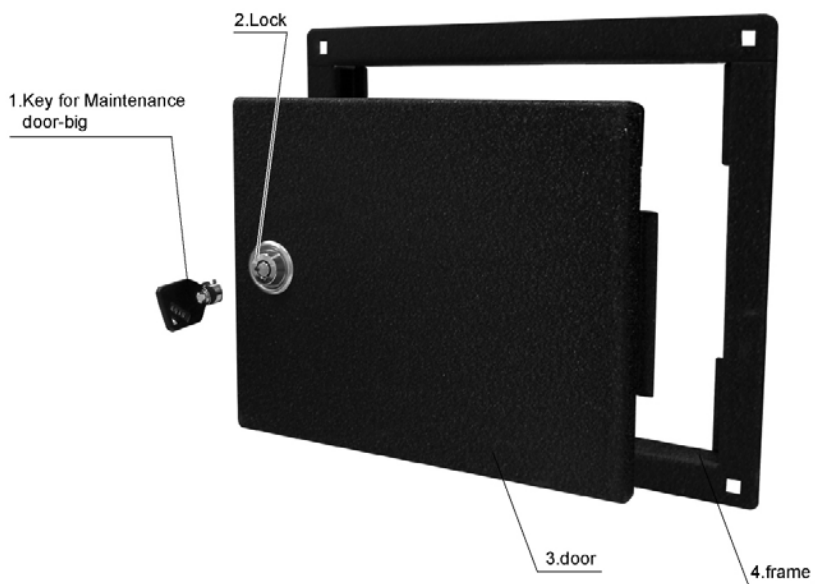


Coin Box Manual



size: W175mm x L145mm x H175mm

Maintenance Door-Big Manual



size: W267mm x L20mm x H232mm

