

TOUCH FX



TFX1 – Infinity Blade FX

Operation & Service Manual

Version 1.1

* Read this manual before use



ADRENALINE
aogames.com

Table of Contents

Contents

| | |
|---|-----------|
| General Remark | 2 |
| Table of Contents | 3 |
| Chapter 01 - Preface | 5 |
| Precaution for Game Operation..... | 5 |
| Safety..... | 6 |
| Environmental Conditions..... | 6 |
| FCC Notices (United States)..... | 7 |
| Chapter 02 | |
| Chapter 03 - Unit Features..... | 8 |
| Hardware Features..... | 8 |
| Cabinet Facts | 8 |
| Voltage..... | 8 |
| Chapter 04 - Unit Installation..... | 9 |
| Assembling your TFX1 Unit | 9 |
| Chapter 05 - Operator Menu, Game Setup | 10 |
| The Operator Menu..... | 10 |
| Chapter 06 - Service & Repair | 12 |
| Computer Connections, ADR-11-1002 | 12 |
| Troubleshooting | 13 |
| Video Troubleshooting..... | 13 |
| Monitor Troubleshooting..... | 14 |
| Audio Troubleshooting..... | 17 |
| Error Message Screens | 17 |
| I/O Board Troubleshooting..... | 18 |
| Touchscreen Troubleshooting..... | 19 |

| | |
|---|-----------|
| Chapter 07 - Parts..... | 22 |
| Screen Assembly TF-00-1010 | 22 |
| Monitor Parts, Back..... | 23 |
| Cabinet Parts | 24 |
| Door Assembly TF-00-1020 | 25 |
| Cash Box Parts | 26 |
| Decal Prints & Wood Parts | 27 |
| Header Parts..... | 28 |
| I/O board TF-04-1200..... | 29 |
| Cabling..... | 30 |
| Wiring Harness | 30 |
| Misc. Parts | 30 |
| Chapter 08 – Diagrams & Schematics | 31 |
| Control Card | 31 |
| Wiring Diagrams | 32 |

Chapter 01 - Preface

Please read this page before preparing your TFX1 product for game play.

The following safety instructions apply to all game operators and service personnel. Specific warnings and cautions will be included throughout this manual.

Use the following safety guidelines to help protect the system from potential damage and to ensure your personal safety:

- Electronic components in the game cabinet run on 110V AC 60Hz (220V/ 50Hz in most of Europe, the Middle East and the Far East delivered units).
- To help prevent electric shock, plug the system into a properly grounded power source. These cables are equipped with 3-prong plugs to help ensure proper grounding. Do not use adapter plugs or remove the grounding prong from a cable. If you must use an extension cable, use a 3-wire cable with properly grounded plugs.
- To help protect your system from sudden increases and decreases in electrical power, use a surge suppressor, line conditioner or Uninterruptible Power Supply (UPS).
- Be sure nothing rests on the system's cables and that the cables are not located where they can be stepped on or tripped over.
- Keep your system far away from radiators and other heat sources.
- Do not block cooling vents.

Precaution for Game Operation

Adrenaline Amusements Inc. assumes no liability for injuries incurred while playing our games.

Operators should be aware that certain health and physical conditions may make people susceptible to injury when playing video games.

Safety



To avoid electrical shock, unplug the cabinet before performing installation or service procedures.

If a power cord is damaged, it must be replaced by the equivalent power cord available from your distributor.



Adrenaline Amusement Inc. assumes no liability for any damages or injuries incurred while setting up or servicing the cabinet. Only qualified service personnel should perform installation or service procedures.

Environmental Conditions

Cabinet is intended for indoor use only. Be sure to keep the cabinet dry and maintain operating temperatures of 59° - 86° (15° - 30°C).

FCC Notices (United States)

Electromagnetic Interference (EMI) is any signal or emission radiated in free space or conducted along power or signal leads, that endangers the functioning of radio navigation or other safety service, or that seriously degrades, obstructs, or repeatedly interrupts a licensed radio communications service. Radio communications services include, but are not limited to, AM/FM commercial broadcast, television, cellular services, radar, air-traffic control, pager, and Personal Communication Services (PCS). These licensed services, along with unintentional radiators such as digital devices (Including computer systems) contribute to the electromagnetic environment.

Electromagnetic Compatibility (EMC) is the ability of items of electronic equipment to function properly together in the electronic environment. While this computer system has been designed and determined to be compliant with regulatory agency limits for EMI, there is no guarantee that interference will not occur in a particular installation. If this equipment does cause interference with radio communications services, which can be determined by turning the equipment off and on, you are encouraged to try to correct the interference by one or more of the following measures:

- Re-orient the receiving antenna
- Relocated the cabinet relative to the receiver
- Plug the game into a different outlet so that the computer and the receiver are on different branch circuits

If necessary, consult a Regulatory EMC representative of Adrenaline Amusements Inc or an experienced radio/television technician for additional suggestions. You may find the FCC interference Handbook to be helpful. It is available from the U.S. Government Print Office, Washington, DC 20402.

This device has been tested and complies with the limits for a Class A digital device pursuant to Part 15 of the FCC Rules. These limits are designed to provide reasonable protection against harmful interference when the equipment is operated in a commercial environment. This equipment generates, uses, and can radiate radio frequency energy. If not installed and used in accordance with the instruction manual, it may cause harmful interference with radio communications. Operation of this equipment in a residential area is likely to cause harmful interference, in which case you will be required to correct the interference at your own expense.

Operation is subject to following conditions:

- This device may not cause harmful interference.
- This device must accept any interference received, including interference that may cause undesired operation.

Chapter 03 - Unit Features

Hardware Features

- Multitouch Screen, Detects 6 inputs
- Ticket dispenser
- 46" Full HD Monitor

Cabinet Facts

Cabinet Dimensions

The image contains three technical drawings of the cabinet. The left drawing shows a top-down view of the cabinet's base with a length dimension of 48" / 1.2m and a depth dimension of 24" / .6m. The right drawing shows a side view of the entire machine, including the screen and ticket dispenser, with a total height dimension of 105.6".

Length = 48" / 1.2m **Depth = 24" / 0.6m** **Height = 105.6" / 2.66m**

Shipping Dimensions

Length = 48" / 1.2m **Depth = 36" / 0.92m** **Height = 88" / 2.25m**
Weight = 350 lbs. / 158.75 kg

Voltage

| Voltage | Operating |
|---------|-----------|
| 110V AC | 4 AMP |
| 220V AC | 2 AMP |

Chapter 04 - Unit Installation

Assembling your TFX1 Unit

1. Carefully remove the Cabinet from the shipping container, giving yourself enough space.
2. Move the cabinet to the desired location.
3. Install the monitor on its support. Insert the 4 bolts on each side of the metal support (See Fig. 1). Make sure the monitor is at the right height before tightening the bolts.
4. Connect the USB, network and power cables from the computer, on the back of the monitor, to the cabinet.
5. Install the LED header at the top of the unit; insert the 4 bolts on each side of the metal support (See Fig. 2).
6. Connect the power cord from the header to the cabinet, on top of the left tube.
7. Plug in the power cord on the back of the cabinet.

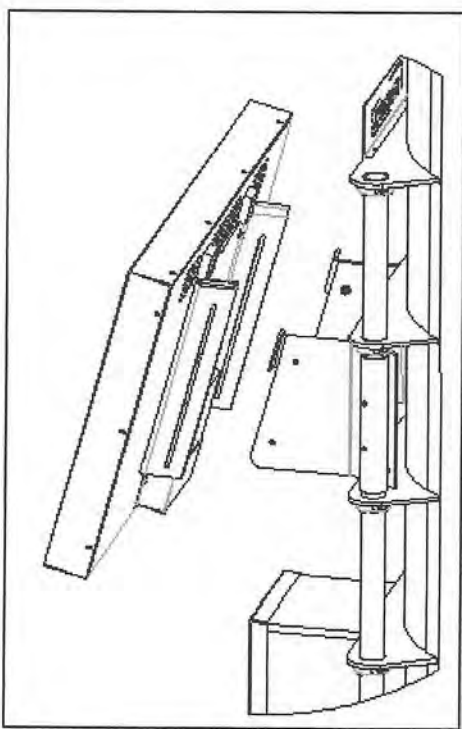


Fig. 1

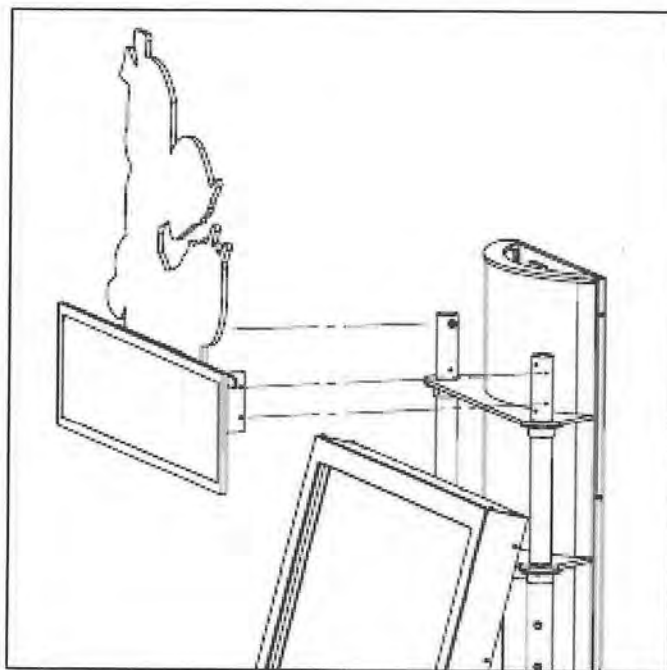


Fig. 2

Chapter 05 - Operator Menu, Game Setup

This chapter describes how to use and navigate the Operator Menu to set up your product and adjust all of the game's parameters.

The Operator Menu

To access the Admin Menu, use the Operator Button located inside the coin door.

To navigate the menu, press the option you want to change, it will highlight in yellow. You can then use the arrows on the right side of the menu to change the highlighted option's value.

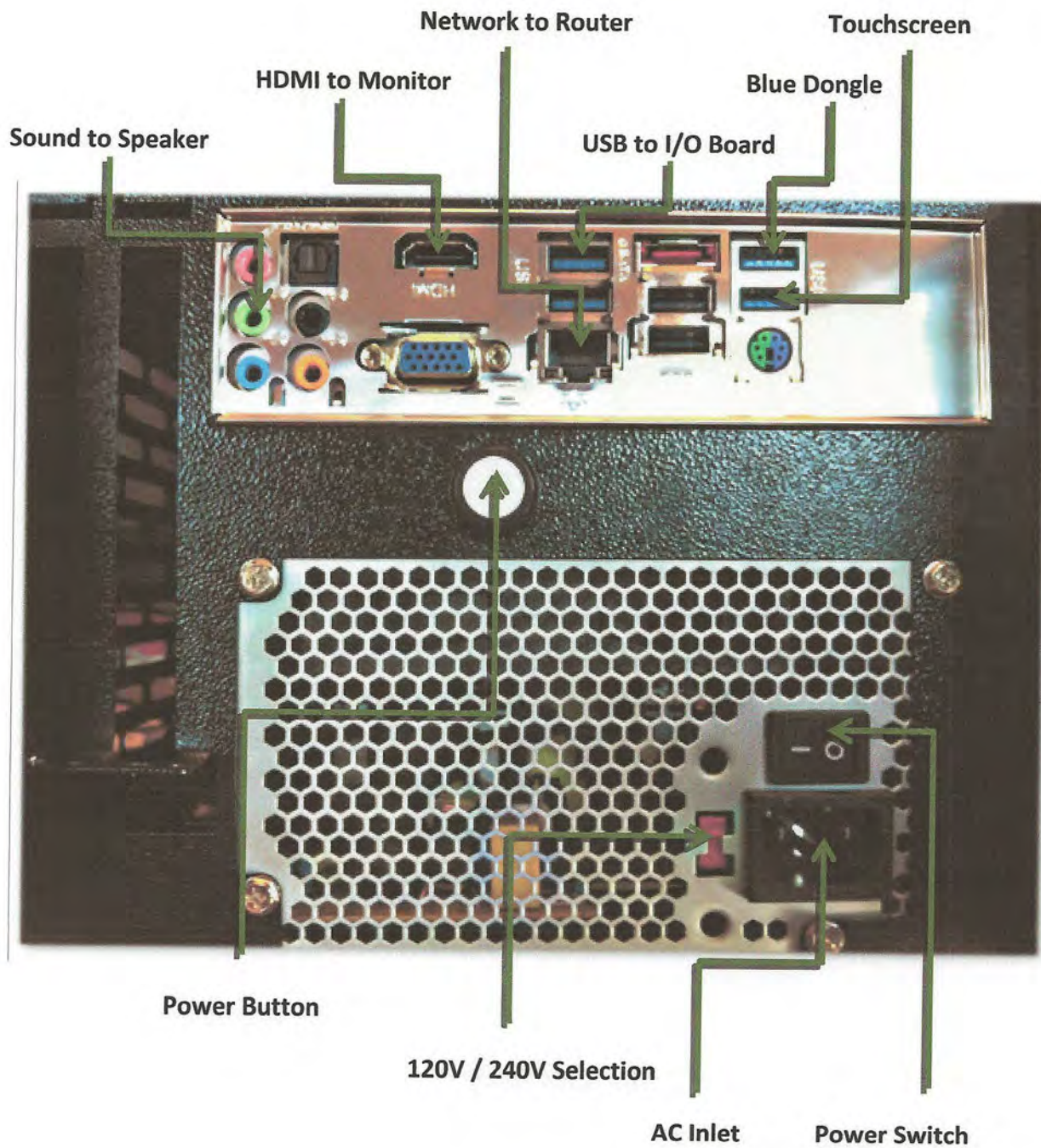
| Operator Menu | What it does |
|--------------------------------------|---|
| Redemption | Activates ticket redemption |
| 2X Ticket Value | For location where the value of the paper ticket is 2. |
| MP Tickets For Winner | Number of tickets awarded to winner in multiplayer |
| MP Tickets For Loser | Number of tickets awarded to loser in multiplayer |
| Coupons Active | Displays 'Coupons' instead of 'Tickets' |
| Card Swiper Active | Display 'Swipe card' instead of 'Insert credits' |
| Tickets for Round 1-9 | Number of tickets awarded for each round |
| GodKing Tickets (hundreds) | Number of tickets awarded by defeating GodKing at round 10. Value is hundreds (ex: 1 = 100 tickets) |
| Tickets for all round after GodKing: | Number of Tickets awarded for round 11 and over |
| Game Volume | Game sound volume |
| Attract Mode Volume | Attract Mode Volume |
| Credits to start: | Number of credits needed to start a game |
| Credits to Continue: | Number of credits to continue a game |
| Survival rounds: | Max number of rounds without continue |

TFX1 – Infinity Blade FX Manual V1.1
 Chapter 05 - Operator Menu, Game Setup

| | |
|--------------------------------------|---|
| Multiplayer rounds: | Number of wins needed to win a multiplayer game |
| Equip Timer: | Countdown Equipment timer |
| Loss Timer: | Do not change |
| Continue Timer: | Countdown to continue |
| Time Before Level Increasing starts: | Adjusts the length of the game, increase the value make the game longer. Decrease to shorten the game |
| Levels to increment: | Adjusts the difficulty, increase value to increase difficulty. Decrease value to decrease difficulty |
| Time Before Next Increment: | Do not change |
| Machine: | Sets Machine ID for Multiplayer. One unit must be set to 1 and the second unit to 2. |
| | |

Chapter 06 - Service & Repair

Computer Connections, ADR-11-1002



Troubleshooting

*** NOTE: When requesting a warranty replacement you will be asked to give the unit's serial number from the back of the unit.**



Video Troubleshooting

No Picture and Sound

Power problem, check the power to the monitor.

There are loose or faulty connections between the monitor and the computer. Make sure the HDMI cable is connected properly to both the computer and the LCD monitor.

No power to computer.

- Verify the computer is ON.
- Remove computer bottom cover and press the RED or WHITE power button.
- Make sure that the power plug is well connected.

The Bios settings have changed, If the computer does not power automatically when the unit is powered on, follow these steps:

- Remove computer bottom cover and plug a USB keyboard in one of the remaining USB ports.
- Press and hold the "Delete" key on the keyboard and then turn the computer on. Keep holding the "Delete" key until the Bios screen appears.
- Using the arrows, select the "Advanced" tab.
- Using the arrows, scroll down to the ACPI Configuration option and press the "Enter" key.

TFX1 – Infinity Blade FX Manual V1.1
Chapter 06 – Service & Repair

| | |
|--|--|
| | <ul style="list-style-type: none"> • Using the arrows, scroll down to the Restore on AC/Power Loss option and press the “Enter” key. • Using the arrows, select the Power On option and press the “Enter” key. • Press the “F10” key then the “Enter” key to exit the Bios screen. <p>Unplug the keyboard and put the bottom cover back on.</p> |
|--|--|

| | |
|---|--|
| <p>Picture Shutters, Freezes Momentarily</p> | <p>The best way to verify the cause is to try and disconnect both USB cables from the computer itself and restart the unit. If the shuttering is still present then the hard drive is usually the cause of this issue.</p> <p>If the shuttering went away just plug back the USB cables one at a time and restart the computer every single time. This will eventually point you into the right direction. Sometimes the USB cables get pulled or squeezed, this causes a power surge back to the computer thus the shuttering issue. Bypassing the USB cable using another one to test your issue will tell you which one to replace.</p> |
|---|--|

Monitor Troubleshooting

| | |
|--|---|
| <p>Identifying your Monitor</p> | <p>First, identify your monitor model. Check the back of the monitor’s casing.</p> <p>If there’s a label in the lower-left corner or in the lower right corner, you have a TFT monitor (See Fig 3).</p> |
|--|---|

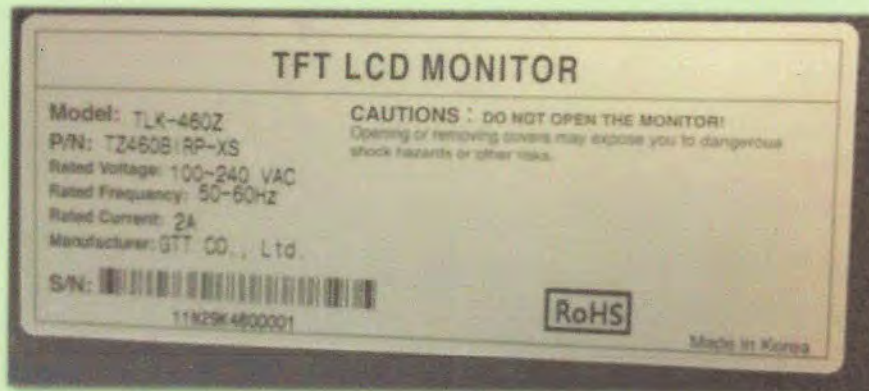


Fig.3

TFX1 – Infinity Blade FX Manual V1.1
Chapter 06 – Service & Repair

If there's a label in the lower left corner, you have an Effinet monitor (See Fig 4).

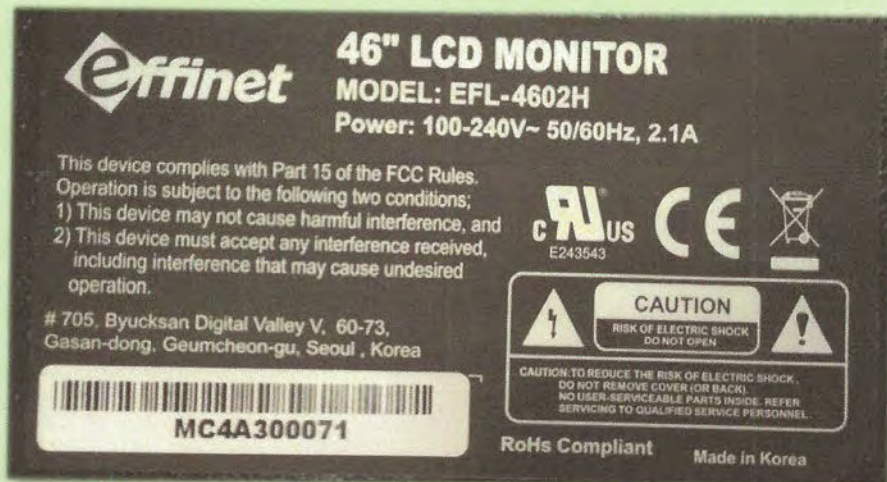


Fig. 4

If there is no label on the back of your monitor you have a Samsung monitor.

| | |
|---|--|
| <p>Framing Problems, Wrong TV Settings / TFT Monitors.</p> | <p>You will to use your monitor's remote control to adjust its settings.</p> <p>* NOTE: Use ONLY the purple buttons when dealing with model A monitors.</p> <ul style="list-style-type: none"> • Press Display / Input Gain / +3 • Bass : 78 • Treble : 78 • Volume : 100 |
| <p>Framing Problems, Wrong TV Settings / Effinet Monitors.</p> | <p>There are no means of adjusting the settings of an Effinet monitor. If problems persist, you will need to replace your monitor.</p> |

TFX1 – Infinity Blade FX Manual V1.1
Chapter 06 – Service & Repair

**Framing Problems,
Wrong TV Settings /
Samsung Monitors.**

You must place your remote control straight up against the glass aiming down in the lower right hand corner of the screen, usually 6 inches from the corner (See Fig 5).



Fig. 5

- Source/ HDMI 4
- Press “Menu”, find Eco Solution under Mode or Plug and Play depending on the model you have.
- Reset all timers to OFF.
- Plug and Play / General / Game Mode / On
- P.Mode on your remote / Screen Fit
- Volume : 95

If you encounter other issues with your monitor you may reset it to factory settings. Press “EXIT” for about 30 seconds then OK your monitor will shut OFF. Turn it on set Language to English, Home Use, D, D, D (blue button on remote) then OK. Set to HDMI4 then set to required settings on top of this page.

TFX1 – Infinity Blade FX Manual V1.1
Chapter 06 – Service & Repair

Audio Troubleshooting

Low Volume / No Sound

Increase the volume in the game by pressing the Operator Button and adjusting the volume options in the Operator Menu.

Increase the monitor’s volume by using the monitor’s remote control. If using a TFT or a Samsung model monitor.

Verify that the 1/8” plug is plugged in the computer’s green sound input jack and that the other end is plugged inside the monitor. To verify if it’s plugged inside your monitor, power up the unit and try touching the plug at the computer’s end. If you hear a grounding sound it is connected.

Error Message Screens

Error when Opening Serial Port

Make sure that a USB cable is connected from the computer to the I/O board.

Windows Boot Manager

At machine start up if you get a windows error message saying “Windows boot manager” then the boot selection failed because a required device is inaccessible.

- Disconnect the usb cable between the cabinet and the screen then, connect a keyboard.
- Disconnect power and reconnect it to restart the computer.
- Press F8 repeatedly until you get to the windows boot selection.
- If you get to a blue boot disk selection press Enter then press again on F8 repeatedly until you get to the windows boot selection.
- Select Normal boot then press Enter.
- Disconnect the keyboard and reconnect the cabinet and the screen.

Dongle not found

The USB Dongle can’t be found. Make sure that the USB Dongle is connected to the computer in the right USB port.

| | |
|----------------------------|---|
| Windows Blue Screen | <p>You will need to restore your hard drive by following these steps.</p> <ul style="list-style-type: none">• Unplug the USB cable between the monitor and the cabinet and plug in a USB keyboard.• Power up the unit and press “F11” when the first splash screen appears to access the boot menu.• Using the arrows on the keyboard select: USB: ..., then press “Enter”.• The restore process will start; it will take about 20 minutes, when done the computer will restart by itself. |
|----------------------------|---|

I/O Board Troubleshooting

Verify if the USB cable between the cabinet and the computer is connected. In the event it seems to be well connected and you still get no response you may verify your power supply inside the cash cabinet access. It needs to output 5 volts and 12 volts in the proper outputs (See Fig 6). There is a plastic screw on the side and can be easily adjusted. If everything is plugged in correctly and power is well adjusted and there are still no credits going in, you may try using another USB cable to connect the board straight to the computer.

The Unit won't Accept Credits

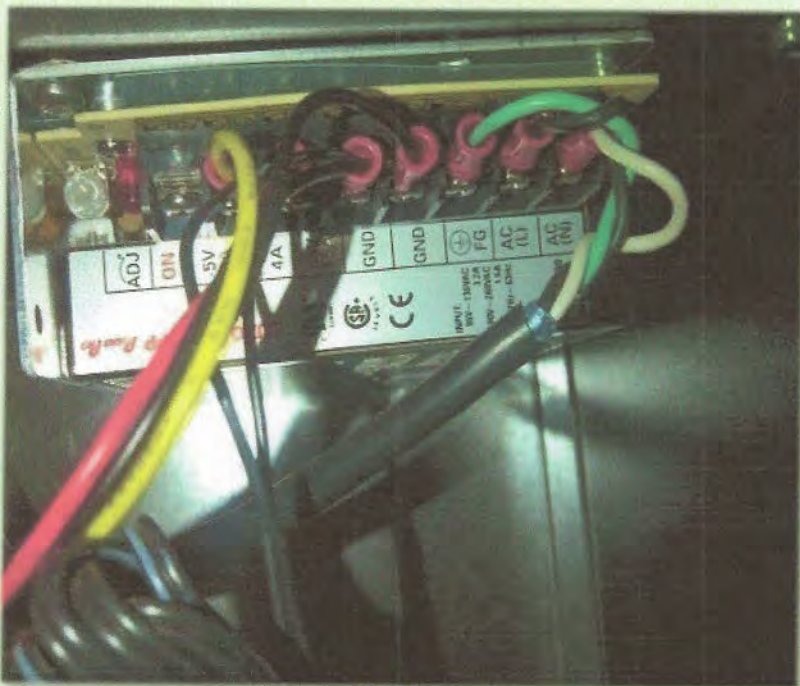


Fig. 6

The Ticket Distributer Keeps Turning

This usually happens when the 4 pin connectors are swapped in the wrong order or one of the fuses has blown on the I/O board (See Fig 7).

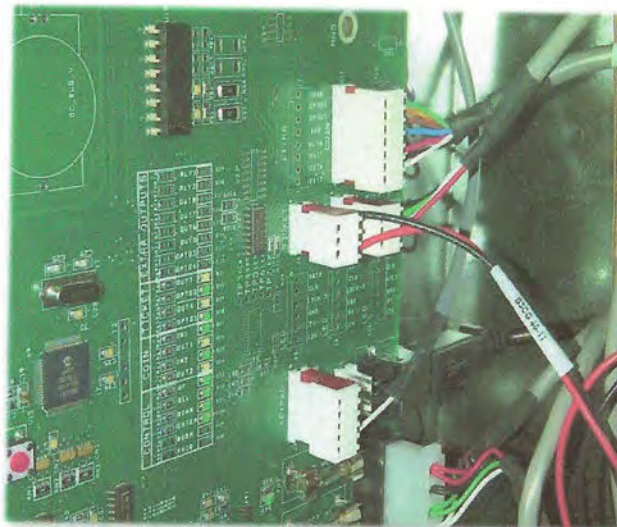


Fig. 7

Touchscreen Troubleshooting

Touchscreen is Irresponsive or Doesn't Work Properly

If you have an issue with your touchscreen you must:

- Plug in a USB keyboard using the USB connector between the cabinet and the monitor.
- Press the letter "Q" if in the game, to quit the game.
- Swap the keyboard for a mouse.
- Double click on the Multitouch Platform icon.
- When the window opens up, verify if you see the serial number of the touchscreen appearing in the upper right corner of the window.

If it does not appear, you must verify if your USB connector is still plugged in to your computer. You can try and swap it with another USB connection on the computer.

If it's well inserted and there is still no response, you will have to remove the monitor cover to expose the touchscreen and verify the USB connection at that end along with the 12 volt connector pin (See fig 8). If the power cord is hot, please disconnect it and have your touchscreen replaced.

TFX1 – Infinity Blade FX Manual V1.1
Chapter 06 – Service & Repair



Fig. 8

If the serial number appears on the upper right of the box, (See Fig 9) you must press Calibration, and then press each of the + when asked to.

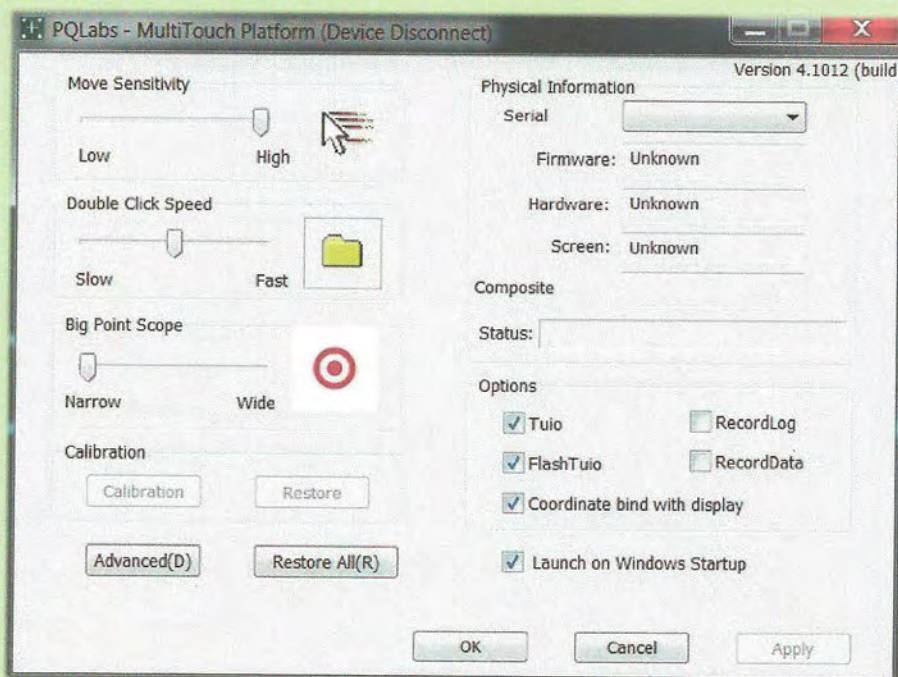


Fig. 9

If you cannot finish the calibration up to the end you will need to remove the monitor cover to expose the Touchscreen. Make sure the power is OFF. You must then verify all three of the white connectors in the corners of the Touchscreen. Gently lift the brackets and re-insert the connectors in place (Fig 10 and 11).

TFX1 – Infinity Blade FX Manual V1.1
Chapter 06 – Service & Repair



Fig. 10



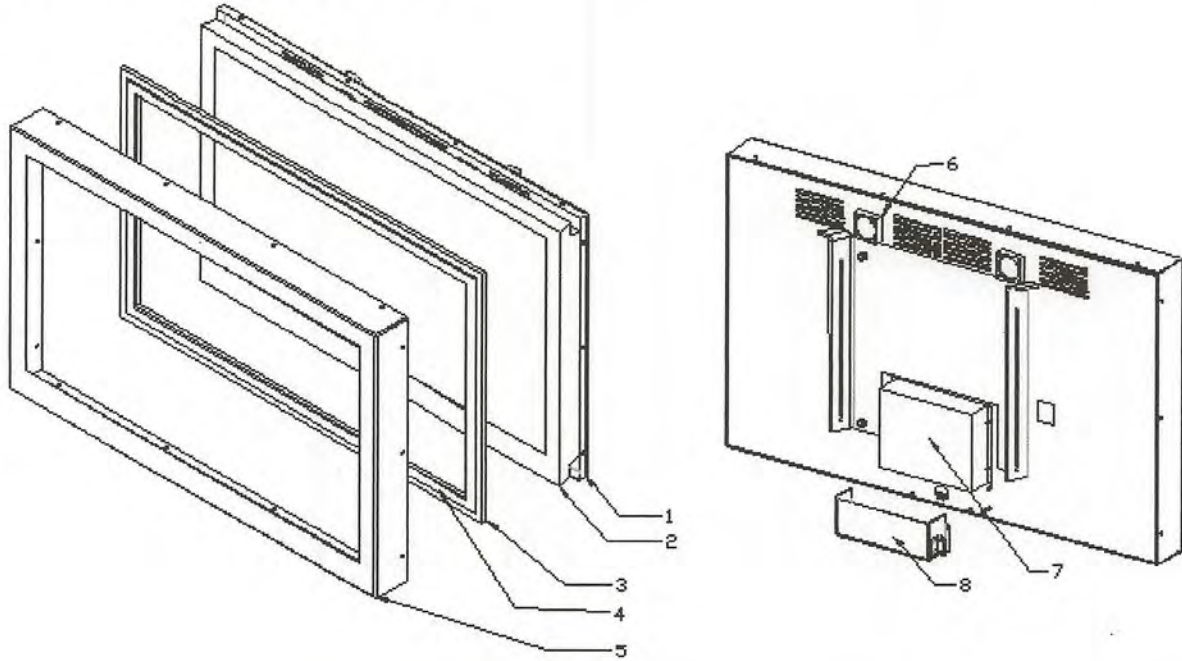
Fig. 11

If those methods do not resolve your issues, you will need to replace your touchscreen.

*** NOTE: Do not remove any parts other than the corner brackets from the touchscreen or you may void your warranty. They are very expensive.**

Chapter 07 - Parts

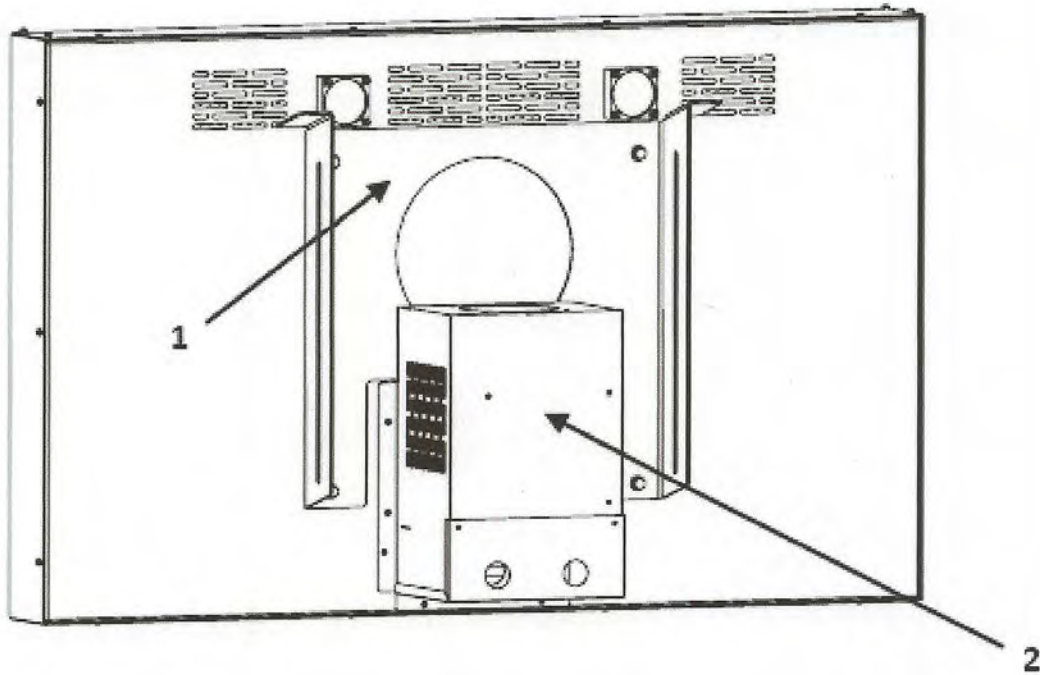
Screen Assembly TF-00-1010



| Ref | Part Description | Part Number |
|-----|-------------------------|-------------|
| 1 | Monitor Back Frame | TF-01-1020 |
| 2 | 46" Monitor | ADR-10-1001 |
| 3 | Tempered Glass | TF-10-1220 |
| 4 | Multitouch Overlay | ADR-10-1002 |
| 5 | Monitor Front Frame | TF-01-1030 |
| 6 | Cooling Fan | TF-05-1250 |
| 7 | Computer (2011 Version) | ADR-11-1002 |
| 8 | Computer Back Cover | TF-01-1040 |

TFX1 – Infinity Blade FX Manual V1.1
Chapter 07 - Parts

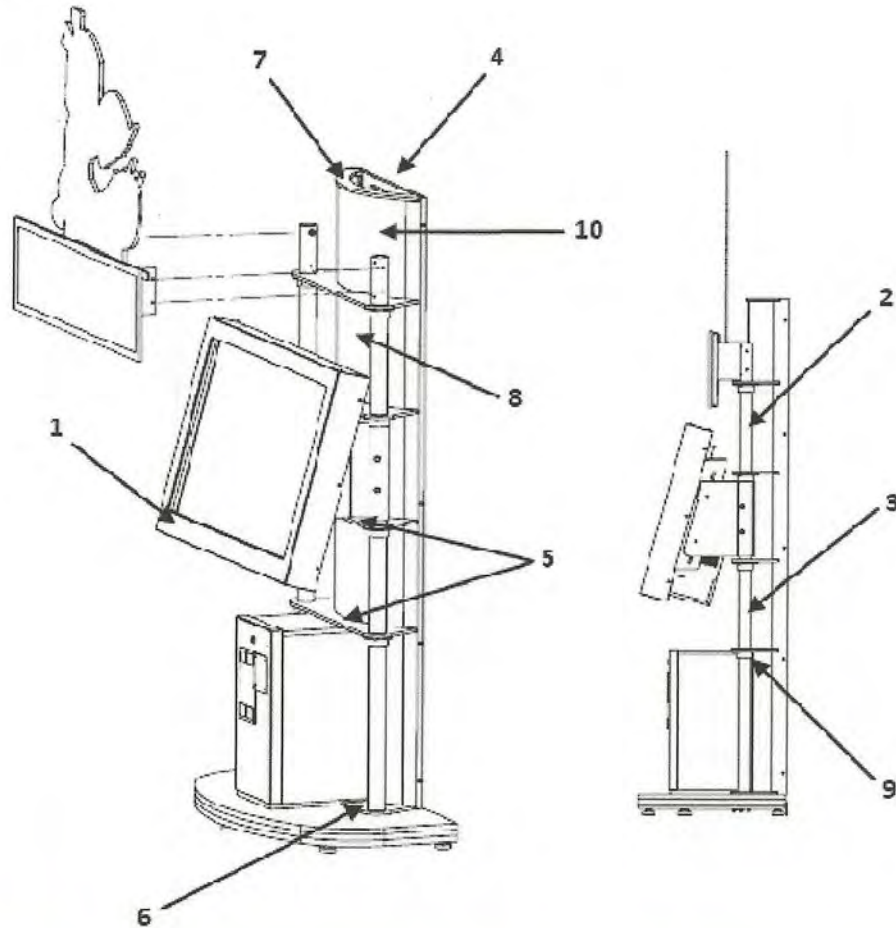
Monitor Parts, Back



| Ref | Part Description | Part Number |
|-----|-----------------------------------|-------------|
| 1 | Monitor Support | TF-01-1050 |
| 2 | PC-BOX, Computer (2012 Version) | ADR-11-1007 |
| N/A | Restore USB Flash Drive – AT5IONT | ADR-11-2010 |
| N/A | Restore USB Flash Drive – E350MI | ADR-11-2011 |
| N/A | Restore USB Flash Drive – A75 | ADR-11-2012 |

TFX1 – Infinity Blade FX Manual V1.1
Chapter 07 - Parts

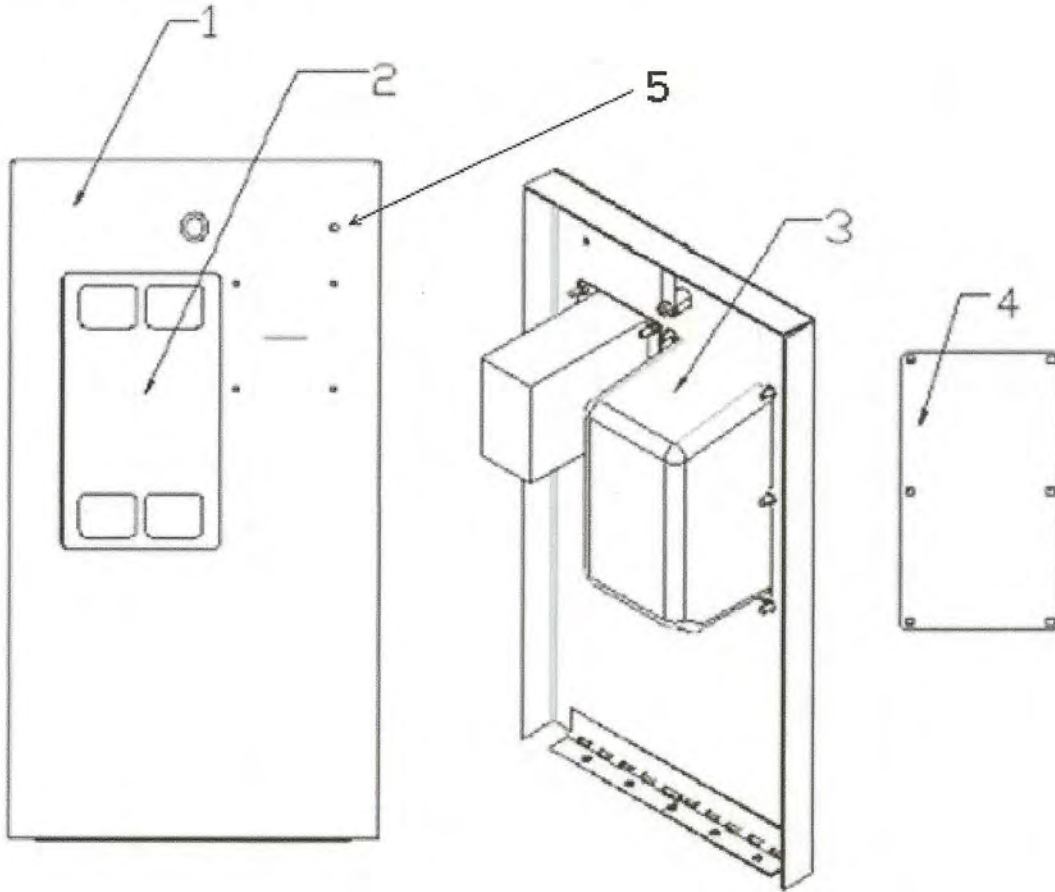
Cabinet Parts



| Ref | Part Description | Part # | Ref | Part Description | Part # |
|-----|--|-------------|-----|--|---------------|
| 1 | 46" Monitor with Enclosure (W/O Touchscreen Overlay) | ADR-10-1003 | 7 | Plastic Top | TF-07-100 |
| 2 | Top Tube | TF-01-1470 | 8 | Plastic Back Panel PTEG (Behind #10) | TF-07-1100 |
| 3 | Bottom Tube | TF-01-1070 | 9 | 2" Collar | ADR-01-1200 |
| 4 | Bracket Link 2 Module | TF-01-1170 | 10 | Red Plastic (Per Foot) | ADR-PC-13-062 |
| 5 | Plastic Support | TF-07-1060 | N/A | T5-21 Watt 6400K 34-1/2" Fluorescent Fixture – 220 Volt Set (3-Prong Unit) | ADR-05-1221 |
| 6 | Plastic Foot Right | TF-07-1070 | N/A | T5-21 Watt 6400K 34-1/2" Fluorescent Fixture – 110 Volt Set (3-Prong Unit) | ADR-05-1220 |
| 6 | Plastic Foot Left | TF-07-1080 | | | |

TFX1 – Infinity Blade FX Manual V1.1
Chapter 07 - Parts

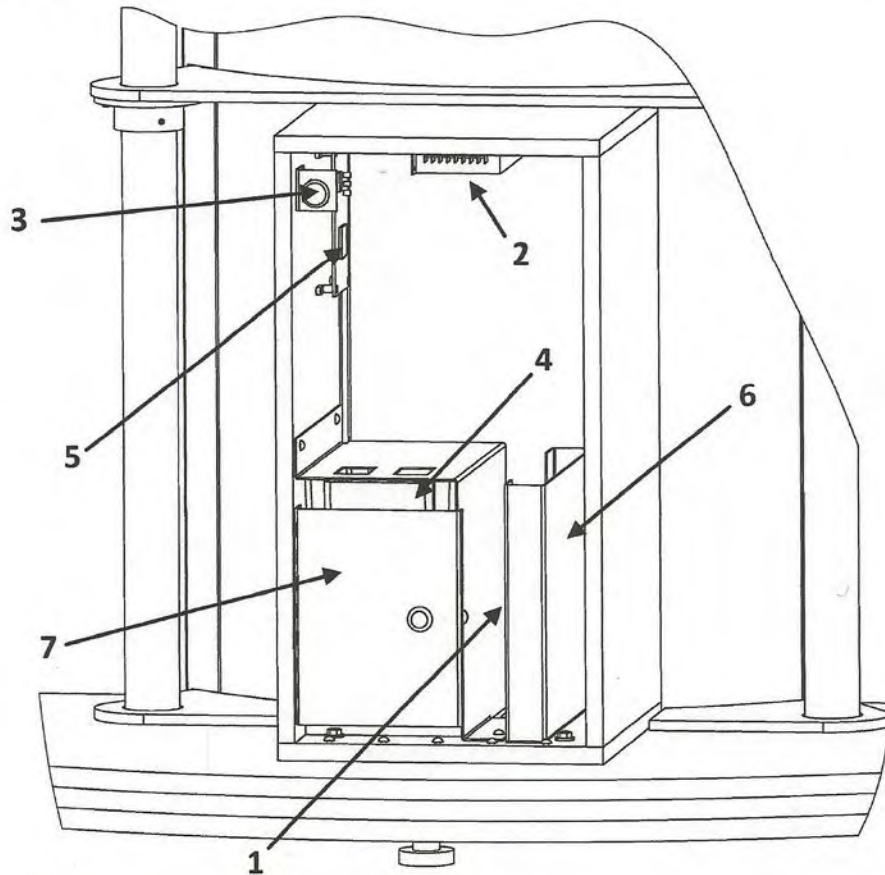
Door Assembly TF-00-1020



| Ref | Part Description | Part Number |
|-----|--|----------------|
| 1 | Coin Door - Standard – Coin + Ticket | TF-01-1090 |
| 2 | Dual Front Plate... | ADR-40-0168-00 |
| 3 | Ticket Feeder | ADR-42-1337-00 |
| 4 | Blank Panel for Coin Acceptor (Optional) | TF-04-001 |
| 5 | LED Low Ticket | ADR-L20691-ND |

TFX1 – Infinity Blade FX Manual V1.1
Chapter 07 - Parts

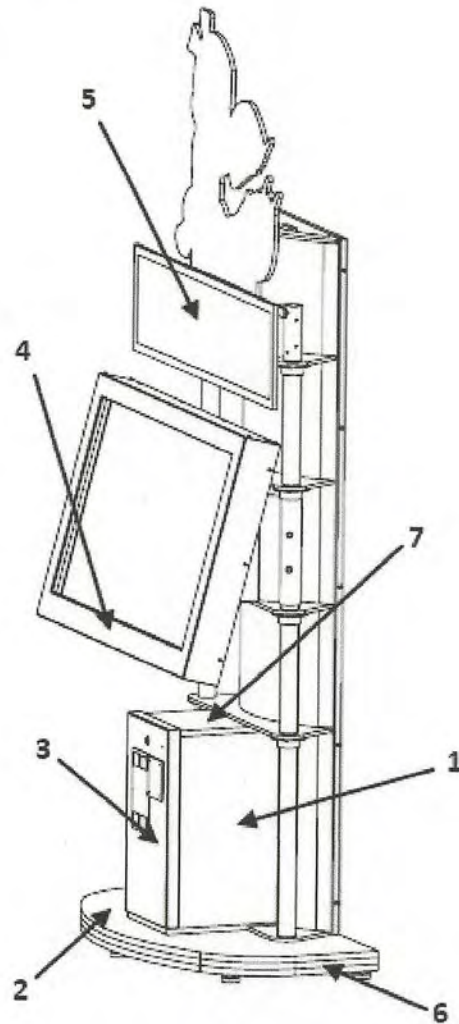
Cash Box Parts



| Ref | Part Description | Part Number |
|-----|------------------------------------|----------------|
| 1 | Low Ticket Switch | ADR-95-4255-00 |
| 2 | Power Supply 5V / 12V | ADR-80-0064-00 |
| 3 | Miniature Switch (Operator Mode) | ADR-49-0577-01 |
| 4 | Cashbox Black Plastic | ADR-42-1102-10 |
| 5 | I/O Board | ADR-04-1200 |
| 6 | Ticket Bin | TF-01-1280 |
| 7 | Cash Box Protection | TF-01-1500 |
| N/A | Meter with Bracket 12V DC 7 Digits | ADR-42-0754-07 |
| N/A | D-Link DSL / Cable 4P Router | ADR-11-1003 |
| N/A | Coin Door-Coin + Bill Validator | TF-01-1091 |

TFX1 – Infinity Blade FX Manual V1.1
Chapter 07 - Parts

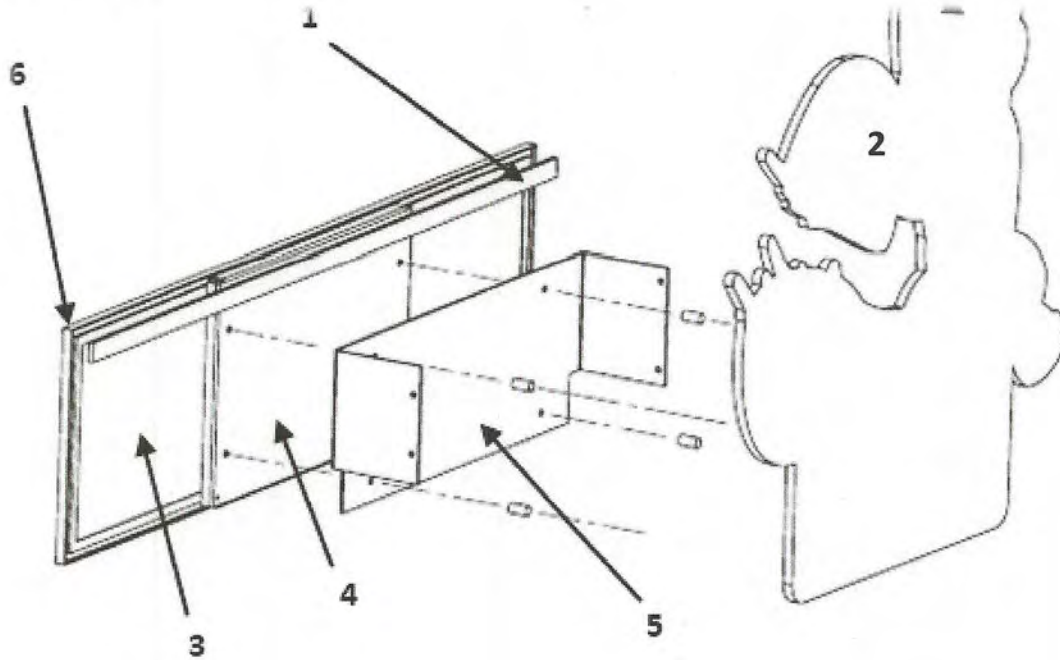
Decal Prints & Wood Parts



| Ref | Part Description | Part Number |
|-----|---------------------------------|-------------|
| 1 | Logo A | ADR-09-1001 |
| 2 | Logo Adrenaline Floor TFX1 | ADR-09-1003 |
| 3 | Tickets Sticker | ADR-09-1006 |
| 4 | TouchFX Sticker | ADR-09-1008 |
| 5 | Decal Backlit Infinity Blade FX | ADR-09-1013 |
| 6 | Floor Assembly | TF-02-2000 |
| 7 | Cash Box Assembly | TF-02-2010 |

TFX1 – Infinity Blade FX Manual V1.1
Chapter 07 - Parts

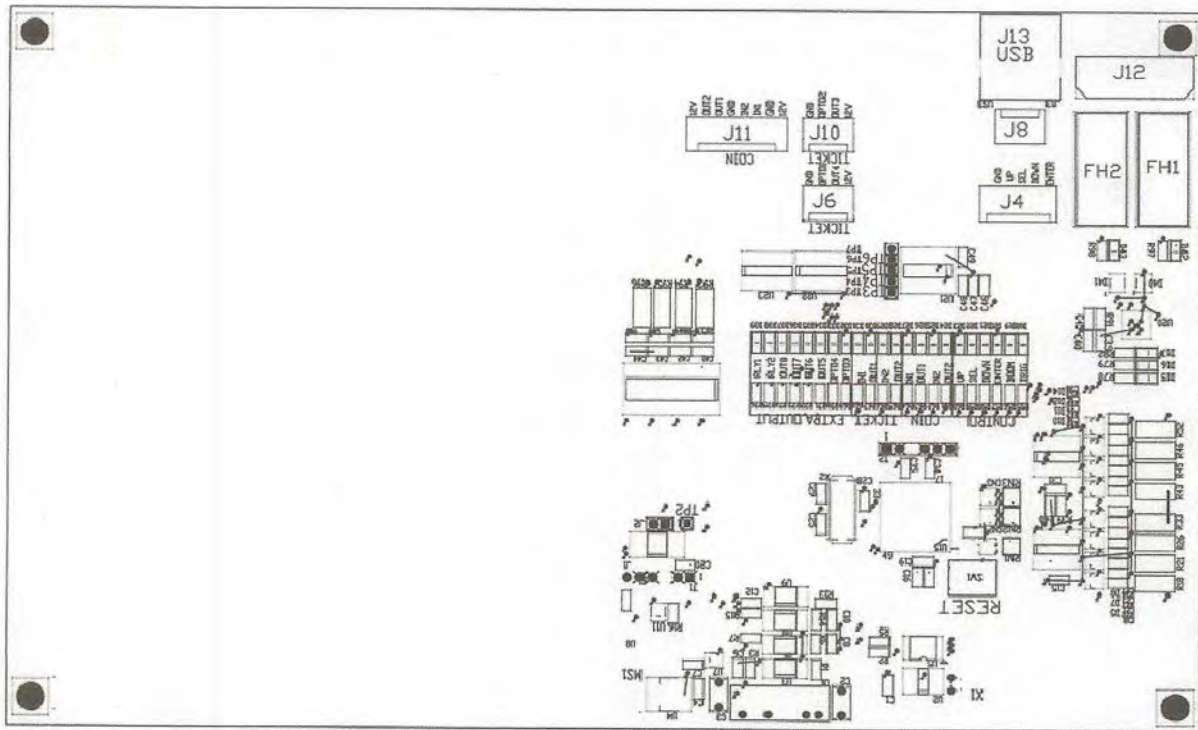
Header Parts



| Ref | Part Description | Part Number |
|-----|-----------------------------|-------------|
| 1 | LED Strip Light | ADR-08-1005 |
| 2 | Top Header Infinity Blade | ADR-09-1016 |
| 3 | LED Signage Panel | ADR-09-1017 |
| 4 | Plaque Display | TF-01-1480 |
| 5 | Support Display | TF-01-1452 |
| 6 | Mocap Corner LED Panel | ADR-VCC9459 |
| N/A | LED Strip Light Y Connector | ADR-08-1025 |
| | | |

TFX1 – Infinity Blade FX Manual V1.1
Chapter 07 - Parts

I/O board TF-04-1200



| Ref | Link |
|-----|-------------------------|
| J4 | To Operator Button |
| J8 | Not Used |
| J6 | To Low Ticket Switch |
| J10 | To Ticket Dispenser |
| J11 | To Coin Door and Meters |

TFX1 – Infinity Blade FX Manual V1.1
Chapter 07 - Parts

Cabling

| Part Description | Part Number |
|--------------------------------------|------------------|
| RJ45 Female to Female Coupler | ADR-CN-RJ45-FF |
| 3 Feet Cate5e RJ45 Cable | ADR-CAT5E-03BK |
| 7 Feet Cate5e RJ45 Cable | ADR-CAT5E-07BK |
| 6 Foot HDMI Cable | ADR-HDMI-140-06 |
| 10 Feet USB "AB" | ADR-USB-AB1-10BK |
| 3 Feet USB Extension "AA" MF | ADR-USB-AA3-03 |
| 2 Feet C14 to 2xC13 Power Splitter | ADR-PW-200B-02 |
| 8 Feet IEC-C13 to IEC-C14 Power Cord | ADR-PW-100-08 |

Wiring Harness

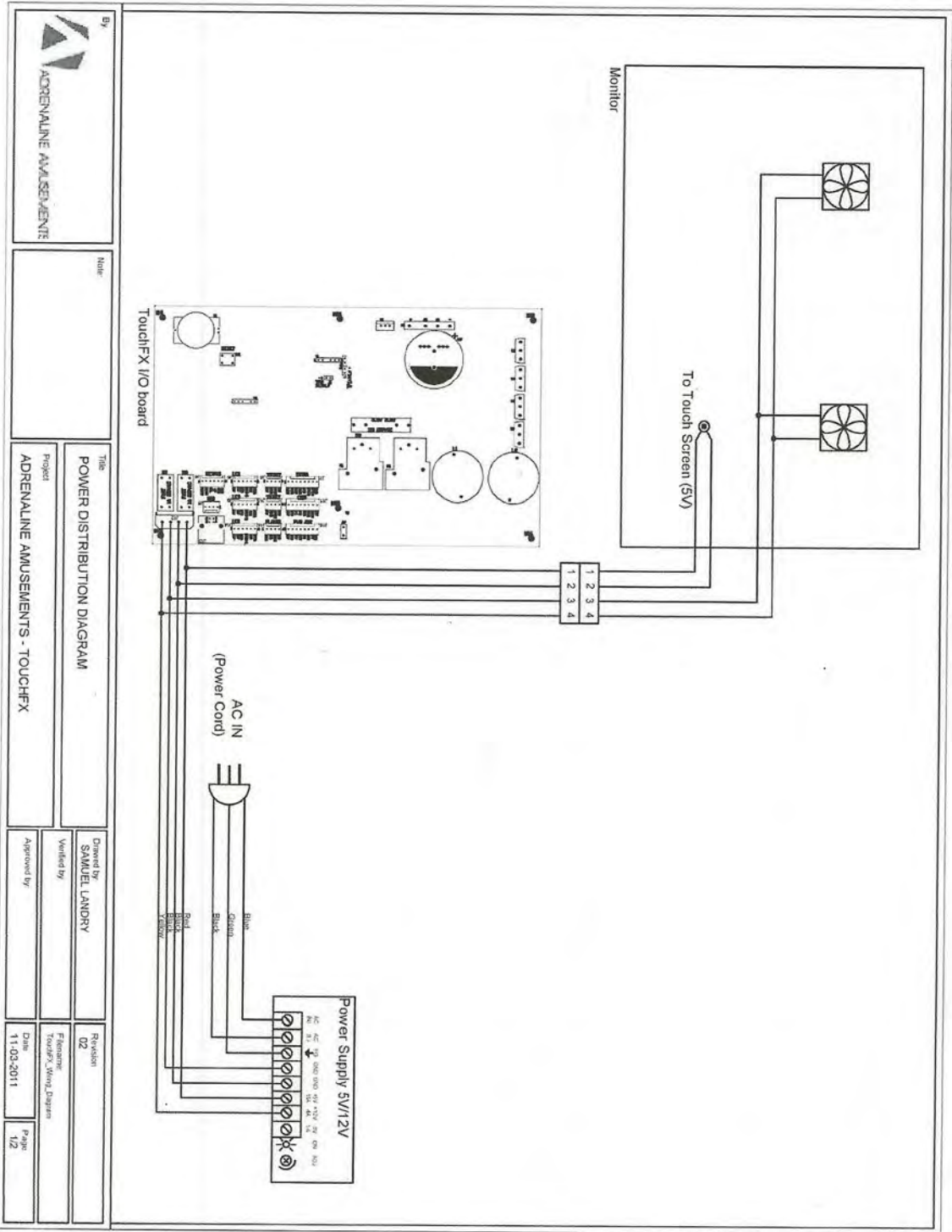
| Part Description | Part Number |
|----------------------------------|-------------|
| Ticket | TFX-03-4010 |
| Coin Acceptor | TFX-03-4020 |
| Low Ticket | TFX-03-4030 |
| Keypad | TFX-03-4050 |
| Power 5-12 Cabinet | TFX-03-4071 |
| Power Unit EMI Filter to C13 | TFX-03-4090 |
| Power for Power Supply 12/5 Volt | TFX-03-4091 |
| Reset Computer | TFX-03-4092 |

Misc. Parts

| Part Description | Part Number |
|--------------------------------|-------------|
| Diamond-Fusion Step 1 – 2.5 ml | TF-15-1001 |
| Diamond-Fusion Step 2 – 2.5 ml | TF-15-1002 |

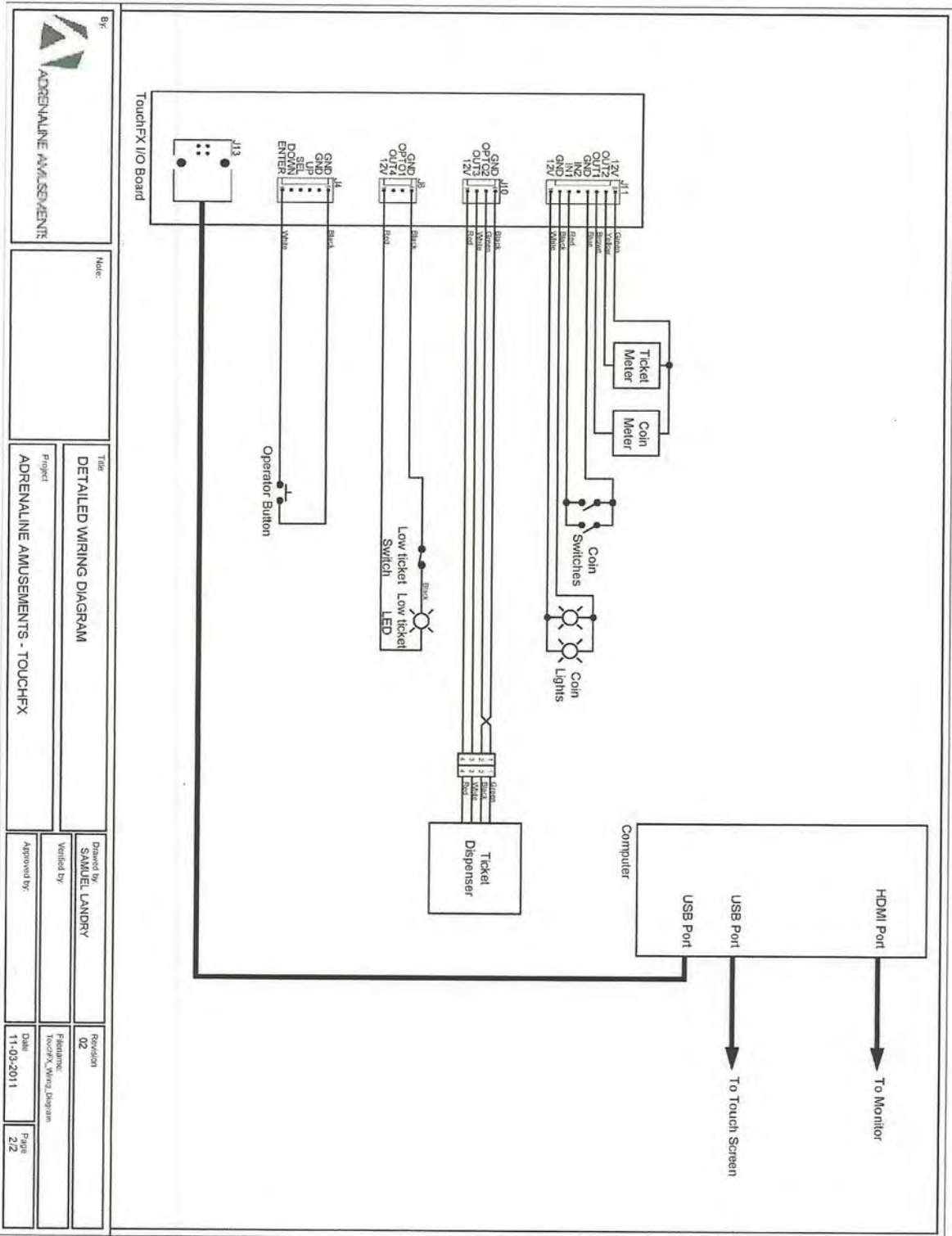
Chapter 08 – Diagrams & Schematics

Control Card



Wiring Diagrams

TFX1 – Infinity Blade FX Manual V1.1 Chapter 08 – Diagrams & Schematics



| | | | |
|--------------|---------------------------------|-----------|------------------------|
| By: | ADRENALINE AMUSEMENTS | | |
| Note: | | | |
| Title: | DETAILED WIRING DIAGRAM | | |
| Project: | ADRENALINE AMUSEMENTS - TOUCHFX | | |
| Designed by: | SAMUEL LANDRY | Revision: | 02 |
| Verified by: | | Filename: | TouchFX_Wiring_Diagram |
| Approved by: | | Date: | 11-03-2011 |
| | | Page: | 2/2 |



ADRENALINE
odgames.com