

Taito[®]

YOU'LL NEVER TAKE YOUR EYES OFF IT!

PANIC MUSEUM
Game Theater with mind screen. *TM*

**FIRST IN THE INDUSTRY!
OVERWHELMING LARGE SCREEN!**

PANIC MUSEUMTM

©TAITO CORPORATION 2009 ALL RIGHTS RESERVED.

Taito Type X²



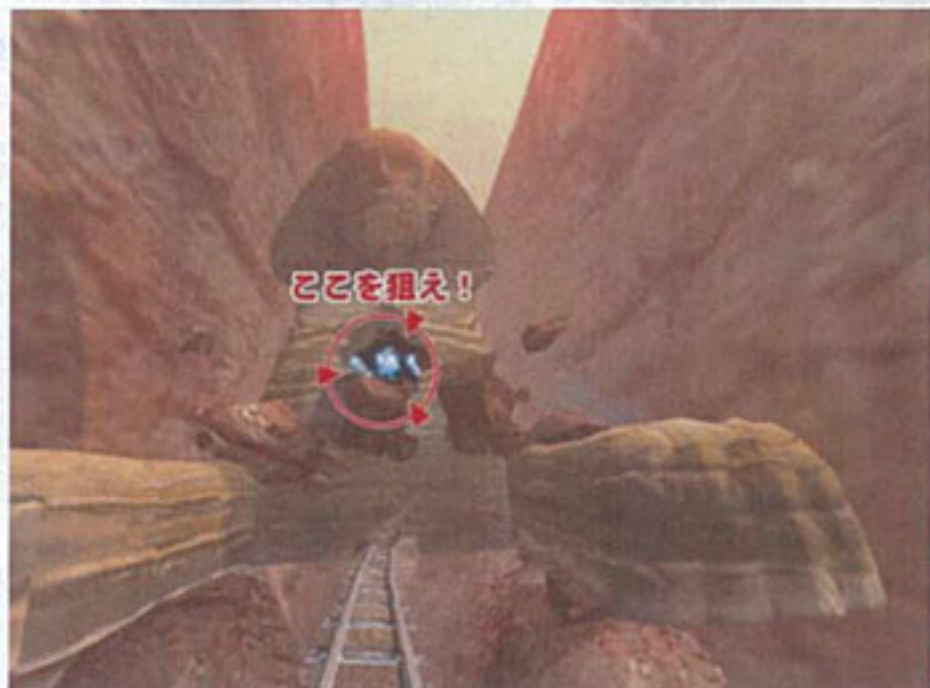
**WATCH & YOU'LL UNDERSTAND.
PLAY & YOU'LL HAVE FUN.**

NO考ゲームTM

NO-BRAINER GAME FOR ALL.

Theatre Style Cabinet With Large Screen !

Lively images just in front of players. Crisp picture from the projector trembles the audience.



Astonishing Sound From Woofer!

The surround sound system, coupled with heavy bass woofer speaker, vibrate the whole cabinet that gives the theater effect!

Multi Function Gun Controller!

The controller works as a flash light in the dark and a handgun during the battle. Unlimited bullets, no reloading necessary and installed with vibration mechanism on the gun, the players can shoot their stress away!



Various Genre In A Museum Setting !

The immense museum offers scenes from ancient era to space age, providing vast selections.

The game has stage selection system and the players can choose the scenes never visited.

Replay and continue functions always offer new scenes and surprises!



Future Upgrade Kit Is In The Works !



COMING SOON!

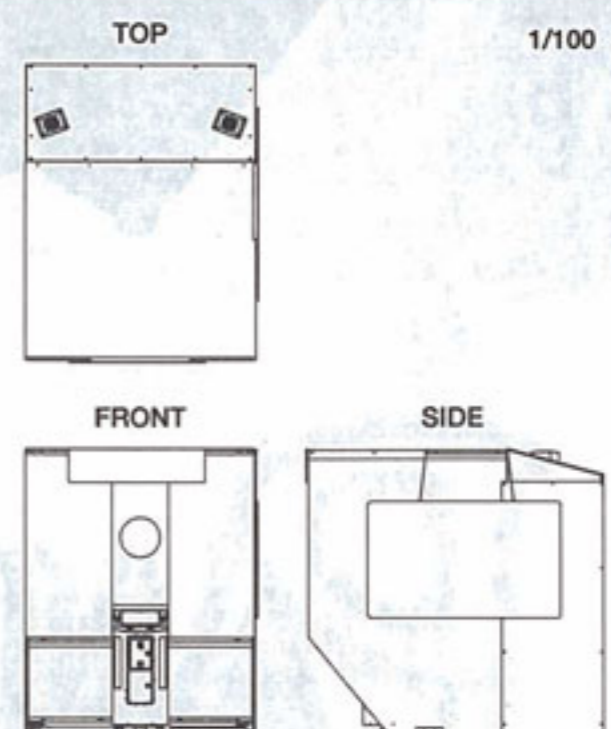
Upgrading to a new title is very easy. All it needs to be changed are a hard disk and some curtains. New versions and new titles can be expected in the years to come!

PANIC MUSEUM

PANIC MUSEUM Specification

- Genre : Arcade Gun Shooting
- No. Of Player : 1~2
- Size : 1,804(W) X 2,313(D) X 2,214(H)mm
(base : 1,780(W) X 1,871(D)mm)
- Weight : 250kg
- Wattage : 500W
- AMP : 6.1A

*Above spec is based on test machine.



*Graphics are still in development stage.

TAITO CORPORATION

<http://www.taito.com/>