

NEW GAME!

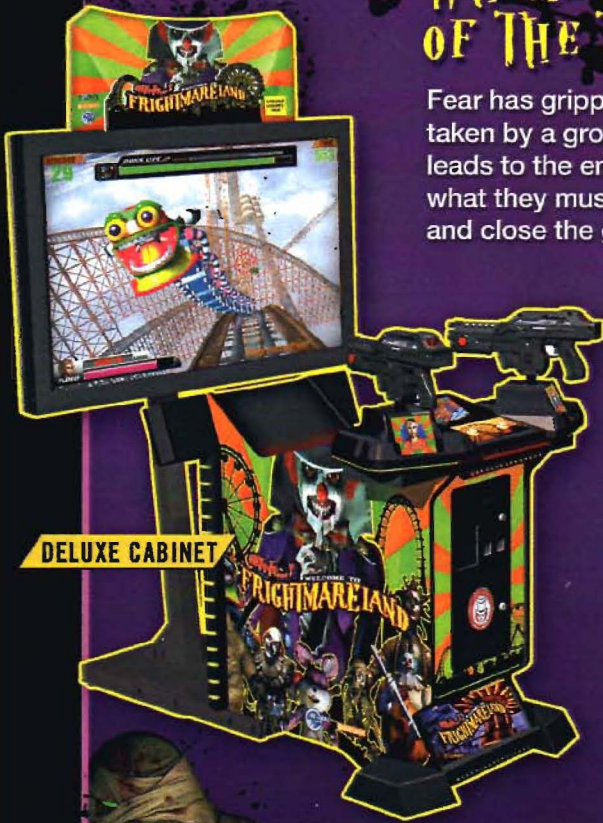
Shh...!

WELCOME TO

FRIGHTMARELAND™

WHERE SCARY CLOWNS ARE ONLY A PART OF THE TERROR THAT LURKS INSIDE...

Fear has gripped the city. Over 100 people have gone missing...presumed taken by a group of lunatic carnival characters. Two Special Agents follow leads to the entrance of a dilapidated amusement park. They now know what they must do...enter FRIGHTMARELAND to find and free the captives... and close the gates forever!



DELUXE CABINET

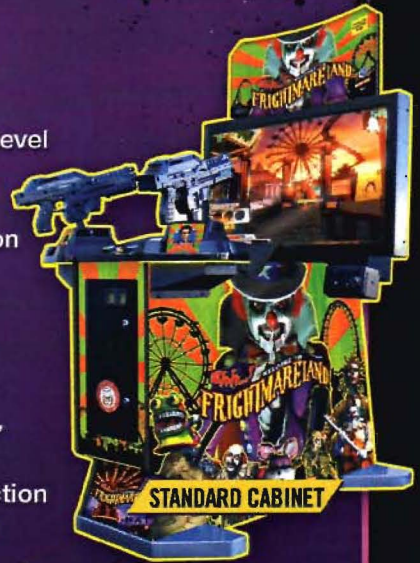
DELUXE DIMENSIONS:
WIDTH - 52" | DEPTH - 57"
HEIGHT - 85" | WEIGHT - 600 LBS*

GAME PLAY FEATURES

- Cooperative 2-player action
- 15 selectable levels & 1 bonus level
- 12 mini-game missions
- 6 boss characters
- 3 different endings depending on how the game is completed
- High-def in-game graphics

HARDWARE FEATURES

- Standard 42" or Deluxe 46"/50" high-def monitors
- Reliable force-feedback gun action
- State-of-the-art cabinet design
- Unique edge-lit control panel
- Eye-catching 3-D Marquee on Deluxe model



STANDARD CABINET

STANDARD DIMENSIONS:
WIDTH - 44" | DEPTH - 57"
HEIGHT - 80" | WEIGHT - 450 LBS*

*APPROXIMATE INSTALLED WEIGHT. ONLY AVAILABLE FROM GLOBAL VR IN THE UNITED STATES, MEXICO, SOUTH AMERICA & RUSSIA.

Manufactured and distributed under license from TAITO CORPORATION.

Shh...! Welcome to Frightmareland is a trademark of TAITO CORPORATION. ALL RIGHTS RESERVED. The TAITO name and logo are registered trademarks of TAITO CORPORATION. The GAMEWAX logo is a trademark of GAMEWAX Ltd. The GLOBAL VR logo is a registered trademark of Global VR, Inc. Game content ©TAITO CORPORATION 2009 & 2011. ALL RIGHTS RESERVED.



For more information contact your local GLOBAL VR distributor or visit globalvr.com



1955 CONCOURSE DR.
SAN JOSE, CA. 95131
PH. 408 597 3400
FX. 408 597 3431
WWW.GLOBALVR.COM
SALES@GLOBALVR.COM

