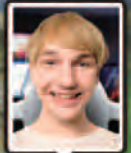
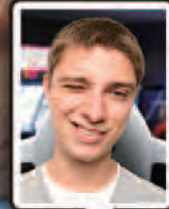
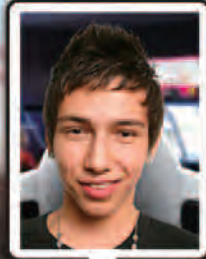


# DEAD HEAT RIDERS

TM



*Link up to*  
**4 players!!**

**POWERED BY**  **NOS**  
Nitrous Oxide Systems



# YOUR FACES IN THE GAME INTENSE DEAD HEAT!!!!

## DEADHEAT SYSTEM (CAMERA)



Photos are taken before the race and appear above the racer during game play.  
Photos heighten the competition of intense dead heat.  
Further more, they are the player's personal bond to the game.

## 42" LCD HD GRAPHICS!

Highly delicate!  
Players will enjoy a race like you're traveling through the real life streets.  
4 Real city courses. [San Francisco / Chicago / New York / London]  
5 Original custom bikes.



### ■ SPEC

Dimensions: W1,060×D1,940×H2,260(mm)

Weight: 230kg

Power consumption: 330W

