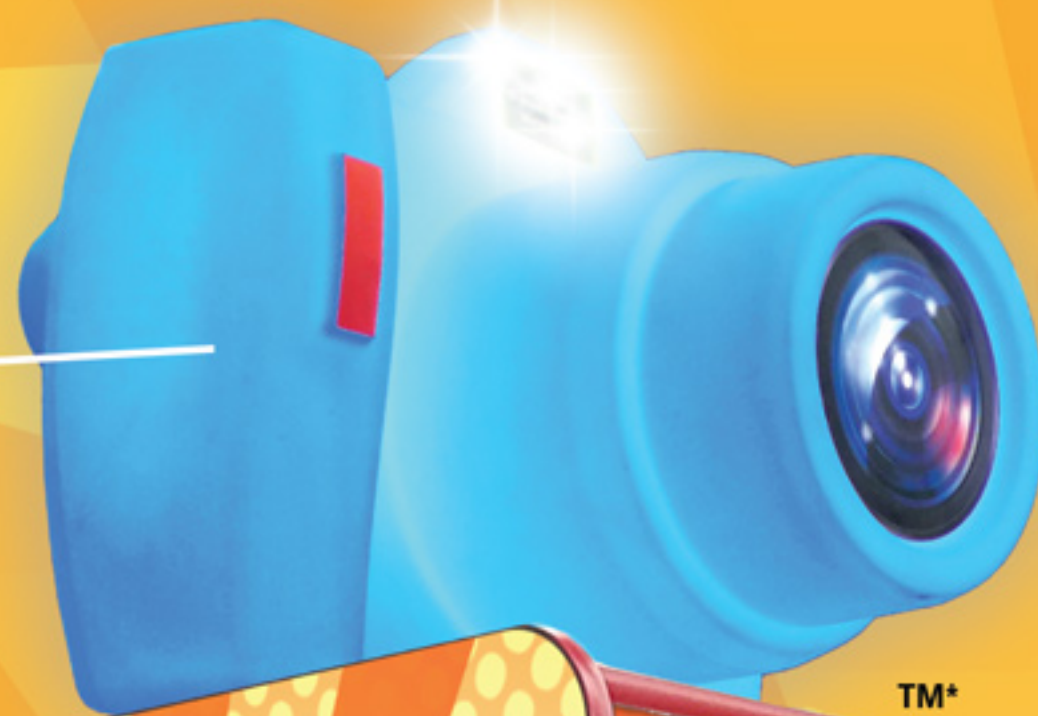




# some of our innovative new features...

Attention-Grabbing, Interactive Color-Changing Camera Topper



TM\*



24" HD LCD Touchscreen with Dazzling Graphics! Fun, Easy-to-Use Smartphone User Interface with Interactive Borders and Digital Stickers.

## Multiple Print Formats!



**TEAMPLAY**  
WWW.TEAMPLAYINC.COM

# FUN included with every Photo!

## HARDWARE FEATURES:

24" High-Definition, LCD Touchscreen  
Allows for Attractive Graphics and Ease of Use

Dual, High-Capacity Dye Sublimation Printers

Wide Camera Angle Captures All the Fun

High-Resolution Camera

Attention-Grabbing, Trademark  
Interactive Camera Topper  
with Color-Changing Capabilities

One Bill Acceptor Standard  
(Wired for 4 Currency Inputs)

Credit/Debit Card Ready

Full Metal Frame with Heavy Duty  
Wheels & Leg Levelers

Greater Reliability

High-Security Locking System

Forced-Entry Feature

Industrial Grade Electronics

Full Cabinet LED Lighting

\*Camera Topper is a trademark  
of Team Play, Inc.

## SOFTWARE FEATURES:

Smart Printing Utilizes Both Printers on Demand

Fun, Easy-to-Use Smartphone User Interface

Remote Status Updates and Reporting

Multiple Print Formats:  
(2" x 6" Photo Strips, 2-Photo 4" x 3",  
4-Photo 2" x 3", Single Photo 4" x 6")

Custom Borders, Logos & Advertising

User Has the Ability to Retake Photos

Multiple Print Upsell Options

Supports Social Media

Digital Stickers

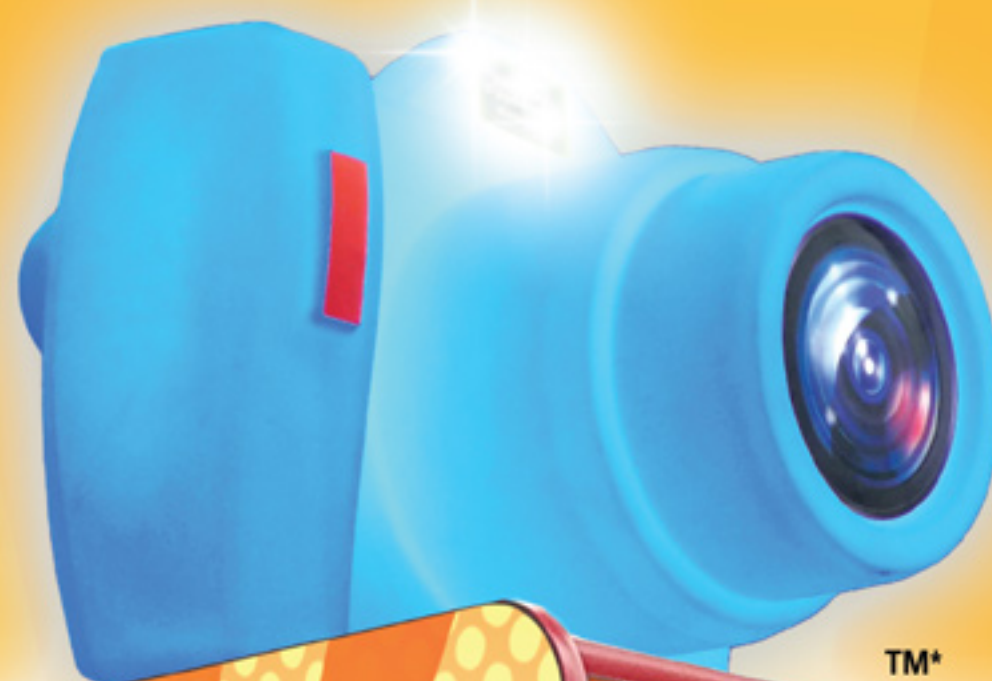
English, Portuguese, and  
Spanish Language Options

Designed and Built in the U.S.A.

### Dimensions & Weight:

Uncrated: Weight 570 lbs.  
31"W x 47"D x 80.5"H  
(w/ Camera Topper 103"H)

Crated: Weight 630 lbs.  
40"W x 52"D x 86.5"H



**TEAM PLAY**  
WWW.TEAMPLAYINC.COM